



The Complete Guide to On-Premise Consumption-Based Data Storage

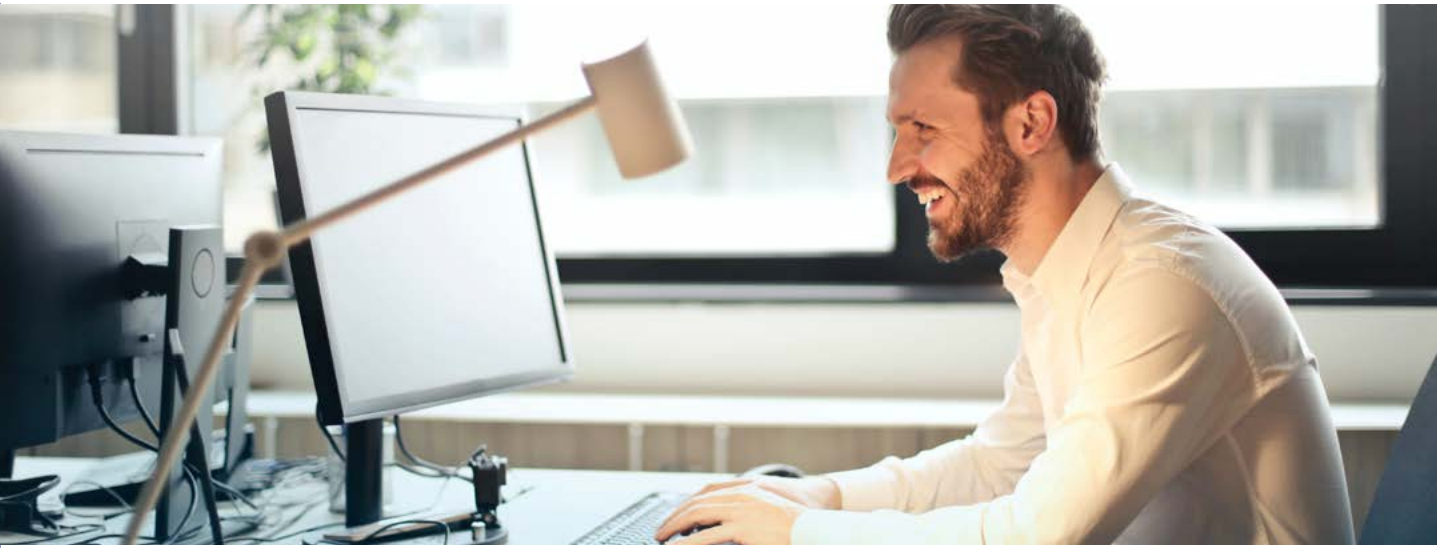
HPE x ACP CreativIT Partner
to Offer GreenLake



ACP

Table Of Contents

What is the GreenLake Consumption-Based Data Storage Solution?	4
Scalability	4
Flexibility	5
Security	6
Control	7
Cost	7
Scope	8
Integrating GreenLake into Your Business	9
Contact Information	10



The Complete Guide to On-Premise Consumption-Based Data Storage

One of the primary challenges of modern IT is scalability. As businesses grow, they must prepare their infrastructures to handle increasing volumes of data, expanding procurement needs, and new technology integrations—all while carefully managing their IT budgets.

Cloud computing broadly has resolved many of the issues facing growing businesses, offering scale-on-demand data solutions with a pricing model that only requires you to pay for the storage you use. That said, the concerns regarding the security of the public cloud and how much control businesses have over their data are legitimate and should be addressed.

With these concerns in mind, many companies seek a more robust solution that

offers both the security of an on-premise, private cloud as well as the pay-per-use pricing model of the public cloud. That's why switching to on-premise consumption-based data storage has become such an appealing option for businesses in recent years.

ACP CreativIT has partnered with Hewlett Packard Enterprise to offer HPE's cutting edge consumption-based storage solution, GreenLake. Below is a complete guide to GreenLake, including information related to the solution's scalability, flexibility, security, control, cost, and scope within your business.

What Is the GreenLake Consumption-Based Data Storage Solution?

At ACP CreativIT, we have partnered with HPE to offer the market-leading GreenLake on-premise data storage solution. Hewlett Packard Enterprise's GreenLake platform offers the security of on-premise storage as well as the cost-effectiveness of a pay-per-use model. Our partnership allows us to manage GreenLake within your organization, simplifying its integration and ensuring it meets your specific data storage needs at every turn.

GreenLake works by giving your business access to newly provisioned resources instantly, sourced from a buffer located on-premise in your data center. The platform allows your business to get resources you need right from your own infrastructure, all while maintaining in-house control over your data at a cost-effective rate.

Scalability

How Scalable Is the GreenLake Storage Solution?

HPE GreenLake offered by ACP CreativIT enables businesses to achieve full data control without sacrificing the scalability of cloud solutions. Just as with the public cloud, GreenLake ensures users are able to increase or decrease data storage capacity as needed, on demand.

Unlike the public cloud, however, GreenLake is an on-premise solution, acting as a single operating model for all your data and applications. This simplifies your cloud computing and houses it all within your own data center. With ACP CreativIT's Information Technology

management service to boot, scalability increases not just across your distributed clouds, but holistically within your own organization.

GreenLake also enables businesses to develop data and analytics that are critical to digital transformation, which has become a core consideration when it comes to scalability. As businesses scale their operations, their technology can easily scale along with them to prevent any major setbacks.

Flexibility

How Easily Can Businesses Adopt GreenLake?

The GreenLake platform features the agility, speed, and flexibility of modern cloud solutions, accelerating app and services deployment without the hassle of traditional on-premise solutions. With the use of an integrated onsite buffer, businesses can easily and quickly acquire new storage resources.

ACP CreativIT's management services also ensure the platform is properly integrated and managed to meet your unique business needs. ACP CreativIT offers expert support to assist with routine tasks and maintenance, freeing your staff for more critical internal projects. The GreenLake solution is user-friendly, housing all data and applications in one easy-to-use cloud platform.



Security

How Safe Is HPE GreenLake as Offered by ACP CreativIT?

While the public cloud does offer scalable data storage solutions, it can jeopardize the security of your data and applications. The public cloud does not offer the control that many businesses seek to maintain over their data security.

As cyber attacks have increased exponentially in recent years, carefully maintained cybersecurity has become a major consideration for organizations across virtually every sector. GreenLake overcomes the security obstacle that has long deterred many businesses from fully embracing cloud computing.

Because GreenLake is hosted on-premise, businesses can manage their data security in-house, according to their needs. ACP CreativIT uses years of security experience to ensure unique compliance needs are met and data is kept 100% private for maximum protection. With a 99.999% uptime rate, GreenLake maximizes both efficiency and security.

Control

How Much Control Does GreenLake Give Businesses Over Their Data?

GreenLake offers businesses what the public cloud cannot—established control over compliance, data sovereignty, privacy, and security. You have total jurisdiction over how your data is managed and used. Not only does this enhance the safety of your data, but it also means your business can more easily institute data protocols that adhere to industry standards.

With full control over your data storage, you can monitor system performance, latency, risk, and cost, enabling you to better optimize your infrastructure. ACP CreativIT works with you to analyze this data and provide strategic solutions that align with your business goals.

Cost

How Does GreenLake Save Businesses Money?

GreenLake is highly cost-effective, especially when compared to other solutions that require expensive upfront fees or that do not follow a cost-per-use pricing model. ACP CreativIT uses GreenLake to help you determine your capacity needs without requiring upfront capital, leaving your financial resources disposable for mission-critical projects.

Advanced metering also allows GreenLake to measure monthly usage and invoice you only on the amount of storage resources you've actually used. Because businesses can incrementally increase these resources as needed, this solution also eliminates overprovisioning (and thus overspending).

Scope

Is GreenLake a Holistic Storage Solution?

Partnered with ACP CreativIT's comprehensive management services, HPE's GreenLake solution can become your sole storage platform, allowing your business to consolidate resources, save time and money, and plan more strategically.

A key advantage of GreenLake is the HPE Datacenter Care, with features including enhanced call handling and relationship management services. The relationship management team helps you proactively manage your data center environment and provide assistance for product upgrades and refreshes.

To support the GreenLake solution, ACP CreativIT's management services enable you to take your IT operations a step further. Our experienced IT consultants help you strategize your IT according to your long- and short-term goals, optimizing your infrastructure as a whole. With ACP CreativIT's help, you can scale your IT solutions along with your entire business.

Some of the main services ACP CreativIT provides in conjunction with HPE's GreenLake solution are the following:

- Strategic consulting to determine capacity needs
- Delivery and complete integration of HPE GreenLake and the buffer into your existing infrastructure
- Supervision of support through HPE Datacenter Care
- Thorough review of how GreenLake will monitor and measure storage used
- Monthly reports detailing your invoices based on capacity used

Integrating GreenLake into Your Business

For businesses in search of a consumption-based data storage service that is securely maintained on-premise, ACP CreativIT and HPE have partnered to provide a holistic solution with GreenLake. From jointly defining your capacity needs to setting up your IT resources and buffer, our team ensures your data storage is both cost-effective and efficient.

To learn more about HPE's GreenLake data storage solution offered by ACP CreativIT, contact us to speak with one of our IT service experts. Call us at (847) 541-6333 or email us at salesinfo@acpcreativit.com. For more information, visit our website at <https://www.acpcreativit.com/>.



Contact Information

Illinois

Mike Affeldt

Senior Vice President of Commercial Sales

☎ **+1 (847) 541-6333**

✉ **salesinfo@acpcreativeit.com**

Georgia

Joel Thomas

Southeast Region Manager

☎ **+1 (678) 999-1641**

✉ **jthomas@arlingtoncp.com**

Wisconsin

CCCCP

Div. of ACP Creative IT

☎ **+1 (920) 435-5353**

✉ **contactus@ccccp.com**

The logo for ACP, consisting of the letters 'A', 'C', and 'P' in a bold, blue, sans-serif font. The 'A' and 'C' are connected, and the 'P' is separate. The logo is positioned in the bottom right corner of the page, partially overlapping a large blue geometric pattern of triangles.